



Industrial Power  
Engineering

# EMPOWERING BUSINESSES ENGINEERING SUCCESS

COMPANY PROFILE





# WHO WE ARE

Dynamo Industrial Power Engineering is a premier engineering firm specializing in end-to-end electrical and mechanical solutions. We are dedicated to delivering robust, reliable, and intelligent systems that form the backbone of modern industry and infrastructure."

"Our core expertise lies in the integration of power generation, distribution, and automation, ensuring seamless operational continuity for our clients."







# MISSION



To engineer and deliver robust, reliable power and control solutions that ensure operational continuity for our clients. We achieve this through integrated engineering excellence, superior craftsmanship, and a unwavering commitment to being the most trusted partner for our clients' most critical energy and automation needs.

# VISION



To be the region's foremost enabler of industrial and technological progress, recognized for powering innovation and setting the benchmark for engineering excellence in energy and automation solutions.

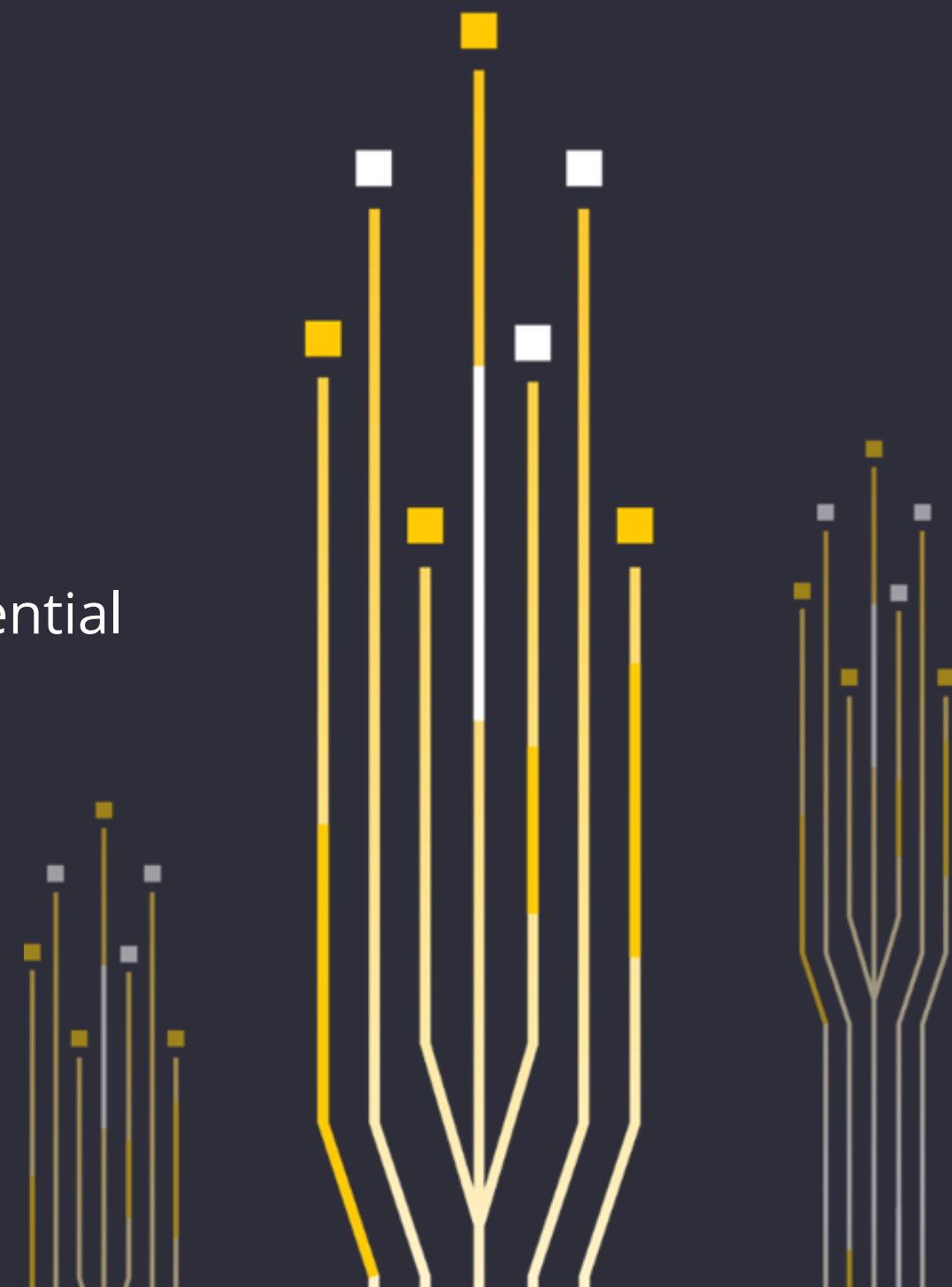




# **“WE PUT POWER INTO YOUR BUSINESS”**

Not just a Slogan it's a commitment we live every day.

We have illuminated and safeguarded critical operations across a diverse range of sectors—from ensuring uninterrupted power in hospitals and telecommunications networks to driving productivity in industrial plants and enhancing comfort in residential areas."





# Comprehensive Engineering Services

## Custom Power Generation

Design, assembly, and installation of diesel generating sets, including sound-attenuated canopies, multi-set synchronization, and comprehensive maintenance programs.

## Automation Systems

integrated control systems for industrial and residential applications, from planning and drafting to full implementation.

## Power Distribution Solutions

Manufacturing of Low Voltage (LV) and Medium Voltage (MV) switchgear, power transformation, and complete distribution systems.

## Engineering & Maintenance

Full-spectrum mechanical and electrical maintenance, mechanical design, and custom metal fabrication services including tailored aluminum and steel enclosures



# PARTNERSHIPS

 Perkins®

 MOTEURS  
Baudouin

 Schneider  
Electric

 Himmel

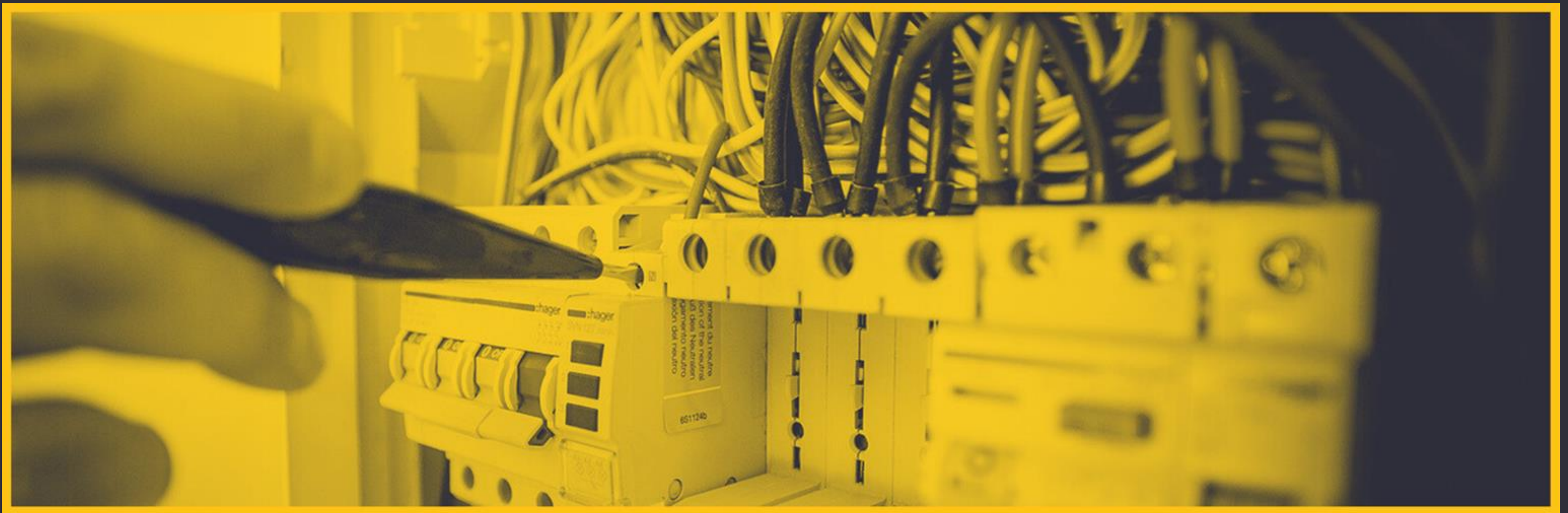
 EATON

 SIEMENS

 KMP BRAND®  
Worldwide

 DSE DEEP SEA  
ELECTRONICS

# PROJECTS SUCCESS STORIES >>>





# Barakat Biscuit Factory



## Powering Production with Silent Reliability

We empowered the Barakat Biscuit Factory with a robust and uninterrupted electrical infrastructure, ensuring seamless production cycles.

- **Master Electrical Planning:** We designed the entire electrical architecture from scratch, detailing everything from cable trays and routing to the internal power distribution and transfer systems.
- **Custom Power Resilience Hub:** The project's cornerstone was the design and implementation of a specialized room housing three synchronized diesel generators.
- **Acoustic & Thermal Engineering:** This room was not merely an enclosure. It was scientifically designed to manage sound radiation using rockwool insulation, achieving a minimal external noise profile while maintaining standard operating temperatures through a calculated ventilation system.



# PROJECT GALLERY



# Turkish Cultural Center, Damascus



## Uninterrupted & Discreet Power for a Cultural Hub

We provided the Turkish Cultural Center with a complete backup power system that operates invisibly and reliably in the background.

- **Silent Assurance:** Installed a "super-silent" class generator, ensuring cultural and educational activities continue undisturbed by noise, perfect for an urban setting.
- **Uninterrupted Experience:** The integrated ATS system guarantees that lights, audio-visual equipment, and climate control never fail, preserving the visitor experience, utilizing Energy backup system
- **Secure & Self-Sufficient:** Our solution included a fortified fuel tank and key electrical upgrades, providing long-lasting power security and protection against tampering.



# Arab International University Hybrid Power Solution

## Mastering Complex System Integration for Sustainability

We engineered the core of a next-generation hybrid energy system.

- System Overview: Integrated multiple power sources: Mains Grid, 6x Sync Generators, 8x On-Grid Inverters, and 2x Off-Grid Inverters.
- Core Innovation: Spearheaded the design and assembly of the master synchronization panel—the "brain" that safely unites the solar and generator systems.
- Technical Execution: Utilized a high-capacity 630A four-pole contactor and advanced smart meters to enable flawless, static synchronization while actively preventing reverse power scenarios.

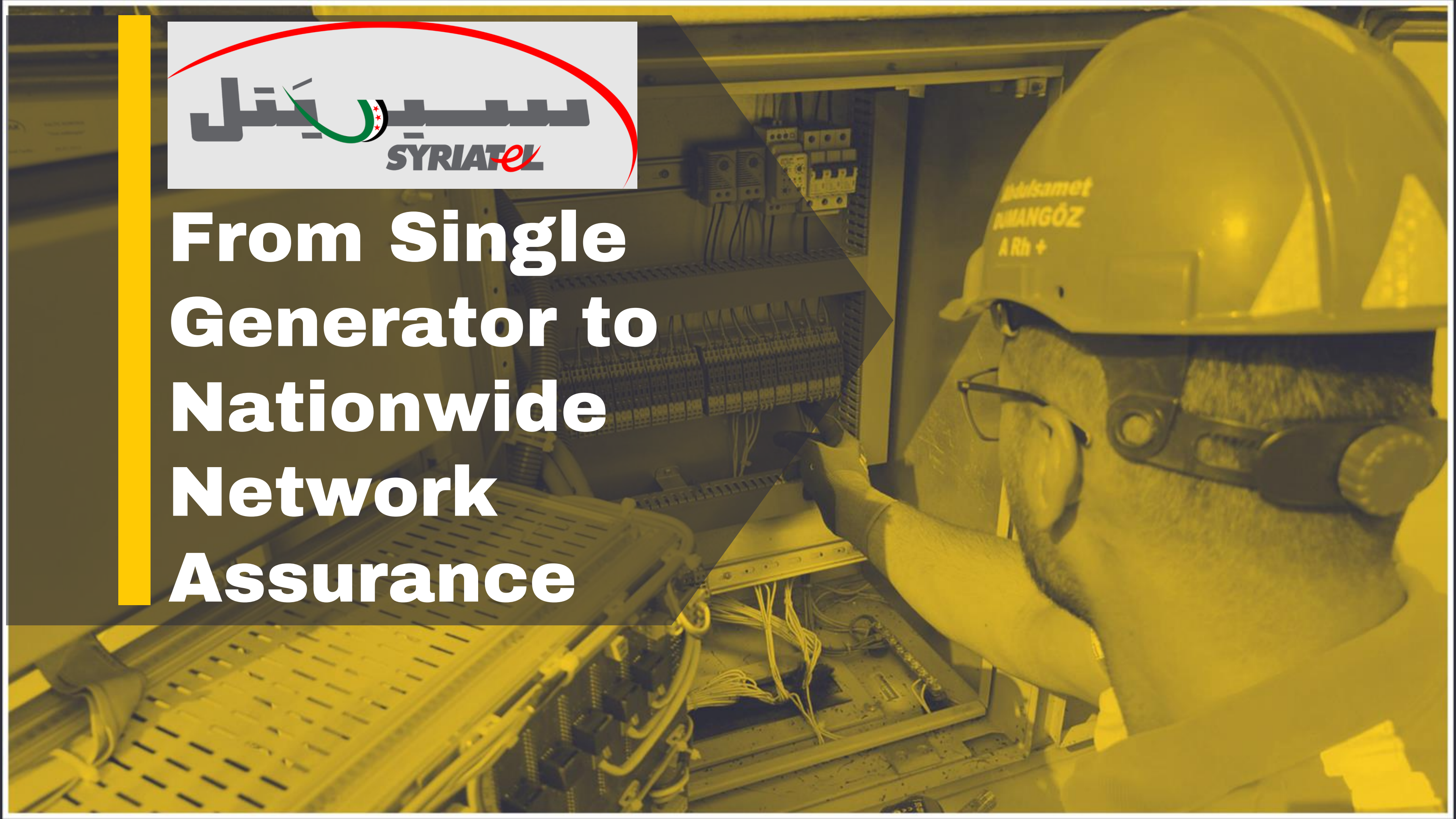
Project Outcome: Achieved the primary goal of drastically reducing diesel fuel usage without compromising the university's critical power reliability.







# From Single Generator to Nationwide Network Assurance





# Syriatel Mobile telecom

## A Strategic Partnership in Telecommunications Resilience

- Massive Deployment: Delivered and installed a vast fleet of over **875+ generating sets**, with units ranging from 20 KVA to 1,500 KVA, forming the backbone of Syriatel's network power resilience.
- Provided sites with more than **700 ATS** panels for seamless power transfer
- Engineered for Critical Uptime: Supplied ultra-reliable, super-silent generators powered by globally renowned Perkins and Baudouin engines, ensuring uninterrupted service for millions of users.
- Headquarters Power Security: Engineered and installed critical power solutions for Syriatel's central headquarters, including a flagship 500 KVA generator and a robust 3 MVA synchronized system (1,500 KVA + 1,500 KVA).



# Al Harash Aluminum Group-AL kisweh

## A Complete Turnkey Transformer Substation

**Project Scope:** Delivered and installed a full transformer substation to power the operations of a leading aluminum manufacturing group.

**Comprehensive Package:** Supplied all critical components, including the Ring Main Unit (RMU), power transformers, measurement and control instruments, and automatic power factor correction capacitors.

**Integrated System:** Ensured all components worked in perfect harmony to provide a reliable, efficient, and compliant power source for heavy industrial loads.

**Value Delivered:** The project provided the client with a robust electrical heart for their facility, optimizing energy efficiency and ensuring power quality for sensitive manufacturing equipment.





# AL Furqan Mosque-Dmascus

## A Complete Turnkey Transformer Substation

We were honored to equip a local mosque with a dedicated electrical heart, ensuring its role as a community beacon remains undimmed.

A Foundation for Community Life: The installed substation provides the, stable power required for lighting, sound systems, and climate control, directly supporting worship and community services.

Core Components with a Purpose:

A reliable Transformer for safe voltage conversion.

Power Factor Correction for enhanced energy efficiency and reduced operational costs, allowing resources to be directed back into community programs.





# Hussiyah Industrial City

## 20MW Solar Plant ON-GRID 20KV

### End-to-End Medium Voltage Grid Integration

This project involved the critical task of interfacing a large-scale 20MW solar facility with the public 20kV grid.

- **System Consolidation:** Engineered the medium voltage (MV) infrastructure to combine the distributed output from twelve individual 0.4/20kV transformers into a single, stable grid interconnection point.
- **Intelligent Protection & Control:** Enhanced the system's safety and reliability with a state-of-the-art MiCOM protection relay. This system governs grid synchronization conditions, commands the Vacuum Circuit Breaker (VCB) to connect/disconnect, and issues instant trip commands in the event of any electrical fault.
- **Turnkey Manufacturing:** All MV switchgear and interconnection cabinets were custom-designed, fabricated, and assembled in our facility. This encompassed structural metalwork, high-current aluminum busbar systems, and the design of robust, weather-proof outdoor enclosures.





# PROJECT GALLERY













# Al-Saboura Military Housing Complex



## Restoring Critical Infrastructure for National Security

The Mandate: Commissioned by the Ministry of Defense to execute extensive electrical rehabilitation for the safe reoccupation of key military housing.

Scale of Impact: Successfully rehabilitated the electrical systems for over **200 apartments**, restoring essential power and safety for military personnel and their families.

Comprehensive Scope: Our work included complete rewiring of all units, installation of new lighting systems, and critical maintenance on the main power distribution boards.

A Mission of Precision: Executed this sensitive project with the highest standards of reliability, ensuring the infrastructure met rigorous operational requirements for the future.



# 1250 kVA Generator for SteelTech's Furnace



## Ultra-reliable on-site power source to run an electric arc furnace

The Client's Challenge: To supply massive, reliable power for an electric arc furnace critical to SteelTech's metal remanufacturing and recycling operations.

Our Engineered Solution: The provision and turnkey installation of a robust 1250 kVA power generation system, engineered for the extreme demands of furnace operation.

Enabling Sustainable Manufacturing: Our solution directly powers the process of transforming scrap metal into valuable new materials, supporting both our client's productivity and broader environmental sustainability goals.

Proven Reliability: The system ensures uninterrupted operation, enabling SteelTech to maintain continuous production cycles and maximize output.



# Zein Pharma Pharmaceutical Plant

## Powering Precision with a 650 kVA Generating Set

To ensure an absolutely reliable and uninterrupted power supply for a sensitive pharmaceutical manufacturing environment, where any outage could compromise critical processes.

WE provided Zein pharma with the custom assembly and installation of a high-performance 650 kVA diesel generating set, featuring a Volvo engine and Stamford alternator for unmatched reliability and power quality.

This premium component combination guarantees the stable and clean power essential for protecting sensitive laboratory and production equipment.





# Our Clients



**FAO**



**UNHCR**



**NCA**



EMBASSY OF  
**BRAZIL**



NORWEGIAN  
REFUGEE COUNCIL



وزارة الداخلية  
Ministry of Interior



السورية للاتصالات  
**SYRIAN TELECOM**



البنك العربي - سورية  
ARAB BANK - SYRIA



# CONTACT US

- 📍 Damascus – Syria AL marjeh Square
- ☎ +963991738822
- ✉ Basheer@Dynamo-power.com
- 📷 @Dynamo.power1
- 🌐 Dynamo-power.com